

春日井6月デイリー



Oil Pattern Distance: 42 Feet **Reverse Brush Drop:** 30 Feet **Oil Per Board:** 45 uL
Forward Oil Total: 13.185 mL **Reverse Oil Total:** 6.975 mL **Volume Oil Total:** 20.16 mL
Forward Boards Crossed: 293 Boards **Reverse Boards Crossed:** 155 Boards **Total Boards Crossed:** 448 Boards

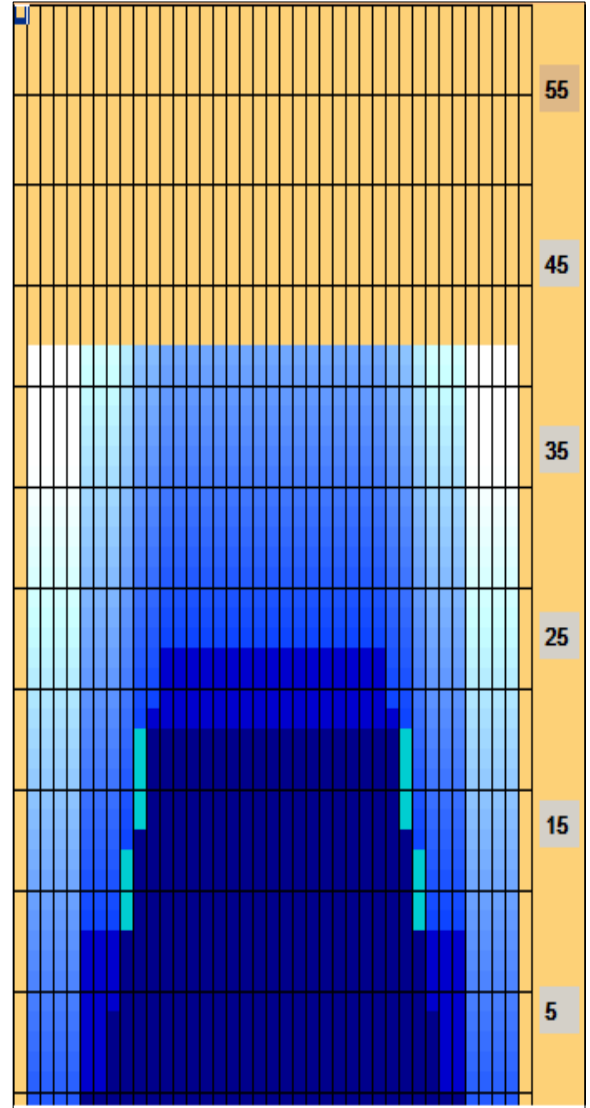
Start	Stop	Loads	Speed	Crossed	Start	End	Feet	T.Oil
1	2L	2R	2	14	74	0.0	1.9	3330
2	6L	6R	2	14	58	1.9	5.8	2610
3	8L	8R	2	14	50	5.8	9.7	2250
4	9L	9R	3	18	69	9.7	17.3	3105
5	10L	10R	2	22	42	17.3	23.5	1890
6	2L	2R	0	26	0	23.5	42.0	0

Start	Stop	Loads	Speed	Crossed	Start	End	Feet	T.Oil
1	2L	2R	0	26	0	42.0	27.0	-15.0
2	12L	12R	1	22	17	27.0	23.9	-3.1
3	11L	11R	2	22	38	23.9	17.7	-6.2
4	10L	10R	2	18	42	17.7	12.6	-5.1
5	6L	6R	2	14	58	12.6	8.7	-3.9
6	2L	2R	0	14	0	8.7	0.0	-8.7

Conditioner:
 Type In or Select One

 TransferType:
 Type In or Select One

- Forward
- Reverse
- Combined
- Buff



Item	3L-7L:18L-18R	8L-12L:18L-18R	13L-17L:18L-18R	18L-18R:17R-13R	18L-18R:12R-8R	18L-18R:7R-3R
Description	Outside Track:Middle	Middle Track:Middle	Inside Track:Middle	Middle: Inside Track	Middle:Middle Track	Middle:Outside Track
Track Zone Ratio	5	1.3	1	1	1.3	5

