

Sand Clock



Oil Pattern Distance:	44 Feet	Reverse Brush Drop:	42 Feet	Oil Per Board:	40 uL
Forward Oil Total:	25.16 mL	Reverse Oil Total:	0 mL	Volume Oil Total:	25.16 mL
Forward Boards Crossed:	629 Boards	Reverse Boards Crossed:	0 Boards	Total Boards Crossed:	629 Boards

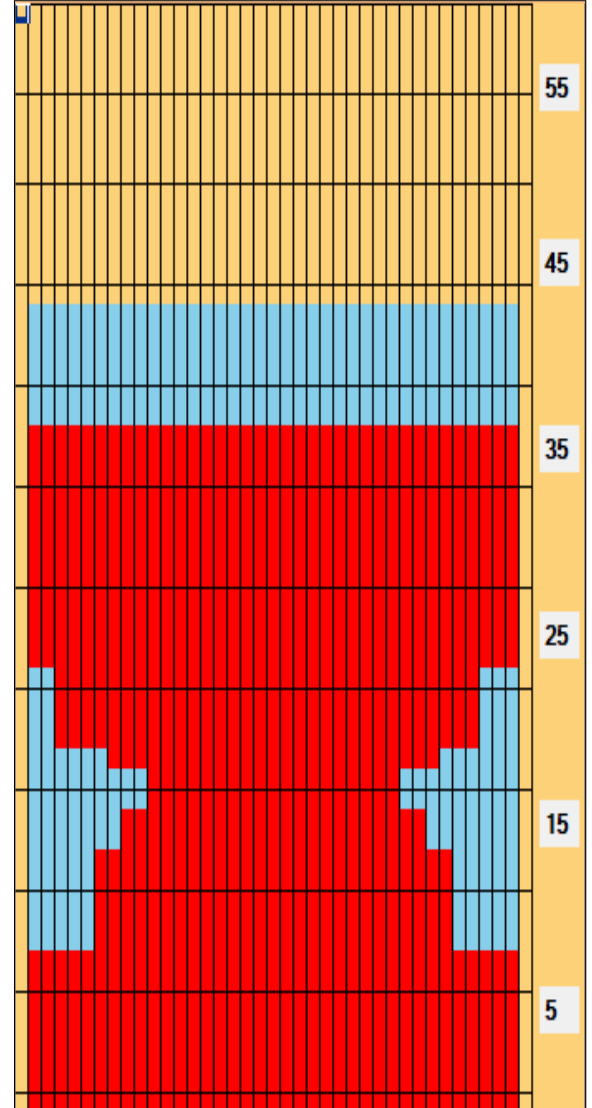
	Start	Stop	Loads	Speed	Crossed	Start	End	Feet	T.Oil
1	2L	2R	6	18	222	0.0	12.7	12.7	8880
2	7L	7R	2	18	54	12.7	17.8	5.1	2160
3	9L	9R	1	14	23	17.8	19.7	1.9	920
4	11L	11R	1	10	19	19.7	21.1	1.4	760
5	8L	8R	1	14	25	21.1	23.0	1.9	1000
6	4L	5R	2	14	64	23.0	26.9	3.9	2560
7	2L	2R	6	14	222	26.9	38.8	11.9	8880
8	2L	2R	0	30	0	38.8	44.0	5.2	0

	Start	Stop	Loads	Speed	Crossed	Start	End	Feet	T.Oil
1	2L	2R	0	26	0	44.0	34.0	-10.0	0
2	2L	2R	0	22	0	34.0	26.0	-8.0	0
3	2L	2R	0	18	0	26.0	10.0	-16.0	0
4	2L	2R	0	14	0	10.0	5.0	-5.0	0
5	2L	2R	0	10	0	5.0	0.0	-5.0	0

Conditioner:
Type In or Select One

TransferType:
Type In or Select One

- Forward
- Reverse
- Combined
- Buff



Item Description	3L-7L:18L-18R Outside Track:Middle	8L-12L:18L-18R Middle Track:Middle	13L-17L:18L-18R Inside Track:Middle	18L-18R:17R-13R Middle: Inside Track	18L-18R:12R-8R Middle:Middle Track	18L-18R:7R-3R Middle:Outside Track
Track Zone Ratio	1.36	1.04	1	1	1.04	1.4

