

handa 2022.4 49F



Oil Pattern Distance: 49 Feet **Reverse Brush Drop:** 49 Feet **Oil Per Board:** 50 uL
Forward Oil Total: 12.35 mL **Reverse Oil Total:** 8.85 mL **Volume Oil Total:** 21.2 mL
Forward Boards Crossed: 247 Boards **Reverse Boards Crossed:** 177 Boards **Total Boards Crossed:** 424 Boards

	Start	Stop	Loads	Speed	Crossed	Start	End	Feet	T.Oil
1	5L	5R	1	10	31	0.0	0.0	0.0	1550
2	6L	6R	1	10	29	0.0	1.4	1.4	1450
3	7L	7R	1	10	27	1.4	2.8	1.4	1350
4	8L	8R	1	10	25	2.8	4.2	1.4	1250
5	9L	9R	1	10	23	4.2	5.6	1.4	1150
6	10L	10R	1	10	21	5.6	7.0	1.4	1050
7	11L	11R	1	10	19	7.0	8.4	1.4	950
8	12L	12R	1	14	17	8.4	10.3	1.9	850
9	13L	13R	1	14	15	10.3	12.2	1.9	750
10	14L	14R	1	14	13	12.2	14.1	1.9	650
11	15L	15R	1	14	11	14.1	16.0	1.9	550
12	16L	16R	1	18	9	16.0	18.5	2.5	450
13	17L	17R	1	18	7	18.5	21.0	2.5	350
14	21L	21R	0	22	0	21.0	35.0	14.0	0

	Start	Stop	Loads	Speed	Crossed	Start	End	Feet	T.Oil
1	2L	2R	0	30	0	49.0	40.0	-9.0	0
2	16L	16R	1	30	9	40.0	35.8	-4.2	450
3	13L	13R	1	30	15	35.8	31.6	-4.2	750
4	10L	10R	1	30	21	31.6	27.4	-4.2	1050
5	7L	7R	1	30	27	27.4	23.2	-4.2	1350
6	4L	4R	1	26	33	23.2	19.6	-3.6	1650
7	3L	3R	1	22	35	19.6	16.5	-3.1	1750
8	2L	2R	1	18	37	16.5	14.0	-2.5	1850
9	2L	2R	0	18	0	14.0	0.0	-14.0	0

Conditioner:
Type In or Select One

TransferType:
Type In or Select One

Forward



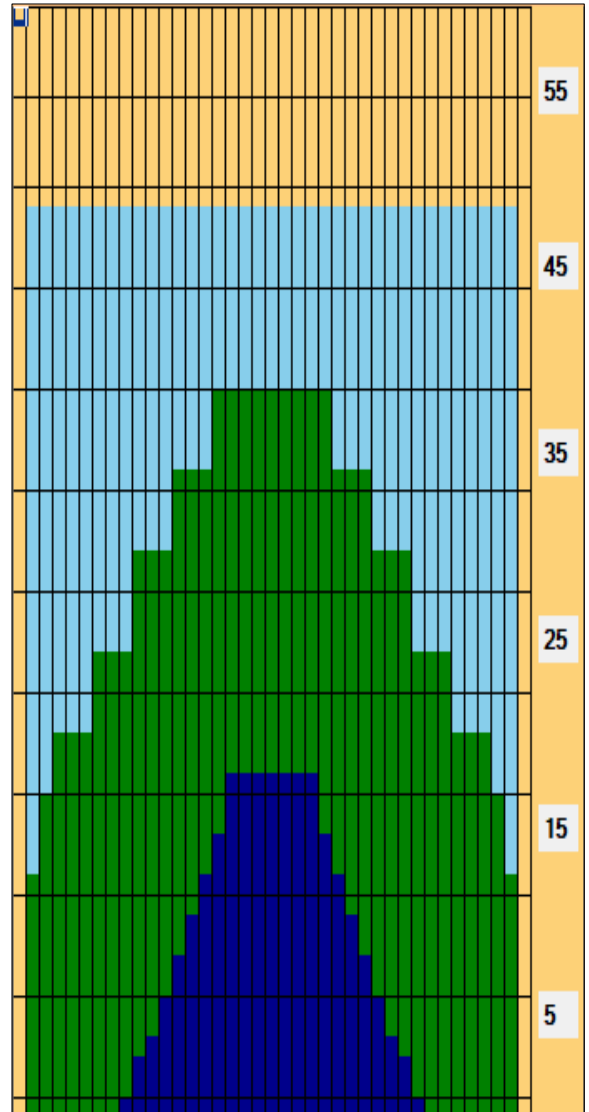
Reverse



Combined



Buff



Item	3L-7L:18L-18R	8L-12L:18L-18R	13L-17L:18L-18R	18L-18R:17R-13R	18L-18R:12R-8R	18L-18R:7R-3R
Description	Outside Track:Middle	Middle Track:Middle	Inside Track:Middle	Middle: Inside Track	Middle:Middle Track	Middle:Outside Track
Track Zone Ratio	4.76	1.89	1.15	1.15	1.89	4.76

