

202508_Fujieda



Oil Pattern Distance:	44 Feet	Reverse Brush Drop:	44 Feet	Oil Per Board:	50 uL
Forward Oil Total:	12.8 mL	Reverse Oil Total:	10.35 mL	Volume Oil Total:	23.15 mL
Forward Boards Crossed:	256 Boards	Reverse Boards Crossed:	207 Boards	Total Boards Crossed:	463 Boards

	Start	Stop	Loads	Speed	Crossed	Start	End	Feet	T.Oil
1	4L	4R	1	14	33	0.0	0.0	0.0	1650
2	5L	5R	2	14	62	0.0	3.9	3.9	3100
3	7L	7R	2	18	54	3.9	9.0	5.1	2700
4	9L	9R	3	18	69	9.0	16.6	7.6	3450
5	10L	10R	1	22	21	16.6	19.7	3.1	1050
6	12L	12R	1	26	17	19.7	23.3	3.6	850
7	2L	2R	0	30	0	23.3	44.0	20.7	0

Forward Reverse More

	Start	Stop	Loads	Speed	Crossed	Start	End	Feet	T.Oil
1	2L	2R	0	30	0	44.0	35.0	-9.0	0
2	11L	11R	2	26	38	35.0	27.7	-7.3	1900
3	10L	10R	3	26	63	27.7	16.7	-11.0	3150
4	8L	8R	2	22	50	16.7	10.5	-6.2	2500
5	7L	7R	1	18	27	10.5	8.0	-2.5	1350
6	6L	6R	1	18	29	8.0	5.5	-2.5	1450
7	2L	2R	0	14	0	5.5	0.0	-5.5	0

Forward Reverse More

Conditioner:
Type In or Select
One

TransferType:
Type In or Select
One

Forward



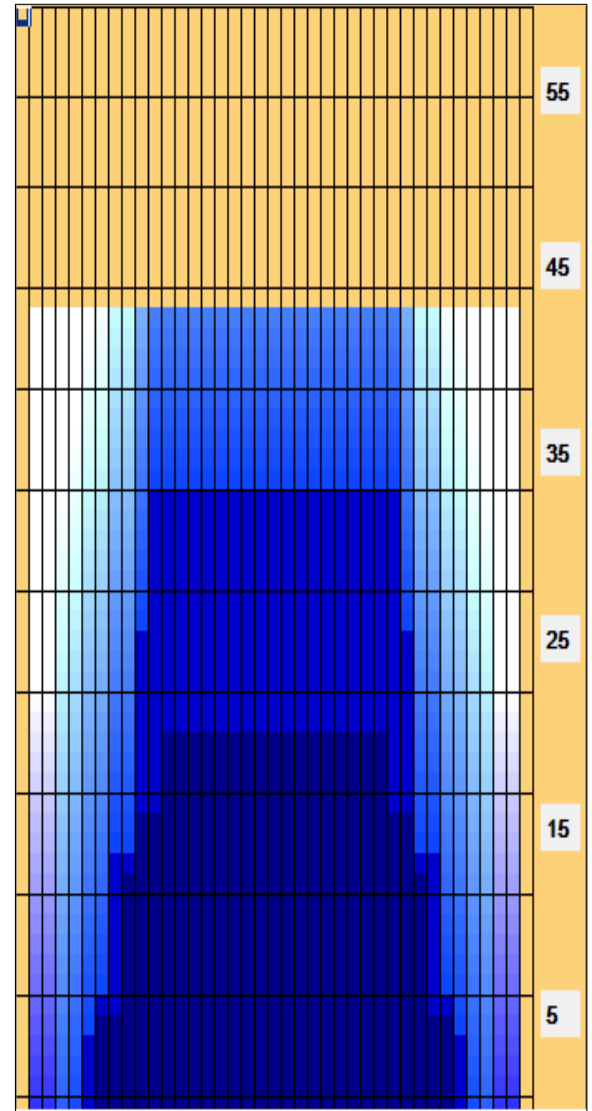
Reverse



Combined



Buff



Item	3L-7L:18L-18R	8L-12L:18L-18R	13L-17L:18L-18R	18L-18R:17R-13R	18L-18R:12R-8R	18L-18R:7R-3R
Description	Outside Track:Middle	Middle Track:Middle	Inside Track:Middle	Middle: Inside Track	Middle:Middle Track	Middle:Outside Track
Track Zone Ratio	6.33	1.28	1	1	1.28	6.33

