

# 202507\_Fujieda



Oil Pattern Distance:	42 Feet	Reverse Brush Drop:	42 Feet	Oil Per Board:	50 uL
Forward Oil Total:	13 mL	Reverse Oil Total:	9.95 mL	Volume Oil Total:	22.95 mL
Forward Boards Crossed:	260 Boards	Reverse Boards Crossed:	199 Boards	Total Boards Crossed:	459 Boards

	Start	Stop	Loads	Speed	Crossed	Start	End	Feet	T.Oil
1	5L	5R	1	10	31	0.0	0.0	0.0	1550
2	7L	7R	1	14	27	0.0	1.9	1.9	1350
3	8L	8R	2	18	50	1.9	7.0	5.1	2500
4	9L	9R	2	18	46	7.0	12.1	5.1	2300
5	10L	10R	2	22	42	12.1	18.3	6.2	2100
6	12L	12R	2	22	34	18.3	24.5	6.2	1700
7	13L	13R	2	26	30	24.5	31.8	7.3	1500
8	2L	2R	0	30	0	31.8	42.0	10.2	0

Forward Reverse More

	Start	Stop	Loads	Speed	Crossed	Start	End	Feet	T.Oil
1	2L	2R	0	30	0	42.0	35.0	-7.0	0
2	14L	14R	2	26	26	35.0	27.7	-7.3	1300
3	12L	12R	2	26	34	27.7	20.4	-7.3	1700
4	10L	10R	1	22	21	20.4	17.3	-3.1	1050
5	8L	8R	1	22	25	17.3	14.2	-3.1	1250
6	6L	6R	2	22	58	14.2	8.0	-6.2	2900
7	3L	3R	1	18	35	8.0	5.5	-2.5	1750
8	2L	2R	0	14	0	5.5	0.0	-5.5	0

Forward Reverse More

Conditioner:  
Type In or Select  
One

TransferType:  
Type In or Select  
One

Forward



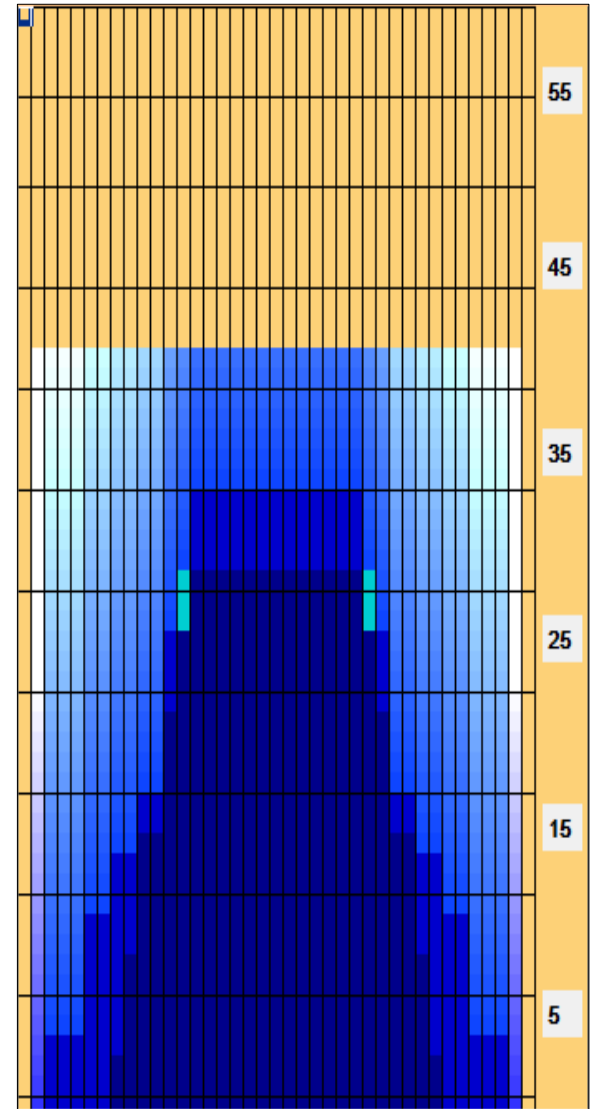
Reverse



Combined



Buff



Item	3L-7L:18L-18R	8L-12L:18L-18R	13L-17L:18L-18R	18L-18R:17R-13R	18L-18R:12R-8R	18L-18R:7R-3R
Description	Outside Track:Middle	Middle Track:Middle	Inside Track:Middle	Middle: Inside Track	Middle:Middle Track	Middle:Outside Track
Track Zone Ratio	8.08	1.72	1.02	1.02	1.72	8.08

