

# Iwata Industry Open Tournament 2025



**Oil Pattern Distance:** 43 Feet      **Reverse Brush Drop:** 43 Feet      **Oil Per Board:** 50 uL  
**Forward Oil Total:** 16.55 mL      **Reverse Oil Total:** 12.45 mL      **Volume Oil Total:** 29 mL  
**Forward Boards Crossed:** 331 Boards      **Reverse Boards Crossed:** 249 Boards      **Total Boards Crossed:** 580 Boards

	Start	Stop	Loads	Speed	Crossed	Start	End	Feet	T.Oil
1	2L	2R	2	10	74	0.0	14	1.4	3700
2	5L	5R	2	14	62	1.4	5.3	3.9	3100
3	8L	8R	2	18	50	5.3	10.4	5.1	2500
4	9L	9R	3	18	69	10.4	18.0	7.6	3450
5	10L	10R	2	22	42	18.0	24.2	6.2	2100
6	12L	12R	2	22	34	24.2	30.4	6.2	1700
7	2L	2R	0	30	0	30.4	43.0	12.6	0

Forward Reverse More

	Start	Stop	Loads	Speed	Crossed	Start	End	Feet	T.Oil
1	2L	2R	0	30	0	43.0	35.0	-8.0	0
2	12L	12R	2	26	34	35.0	27.7	-7.3	1700
3	11L	11R	2	26	38	27.7	20.4	-7.3	1900
4	10L	10R	2	22	42	20.4	14.2	-6.2	2100
5	9L	9R	2	18	46	14.2	9.1	-5.1	2300
6	7L	7R	1	18	27	9.1	6.6	-2.5	1350
7	5L	5R	2	14	62	6.6	2.7	-3.9	3100
8	2L	2R	0	14	0	2.7	0.0	-2.7	0

Forward Reverse More

Conditioner:  
Type In or Select One

TransferType:  
Type In or Select One

Forward



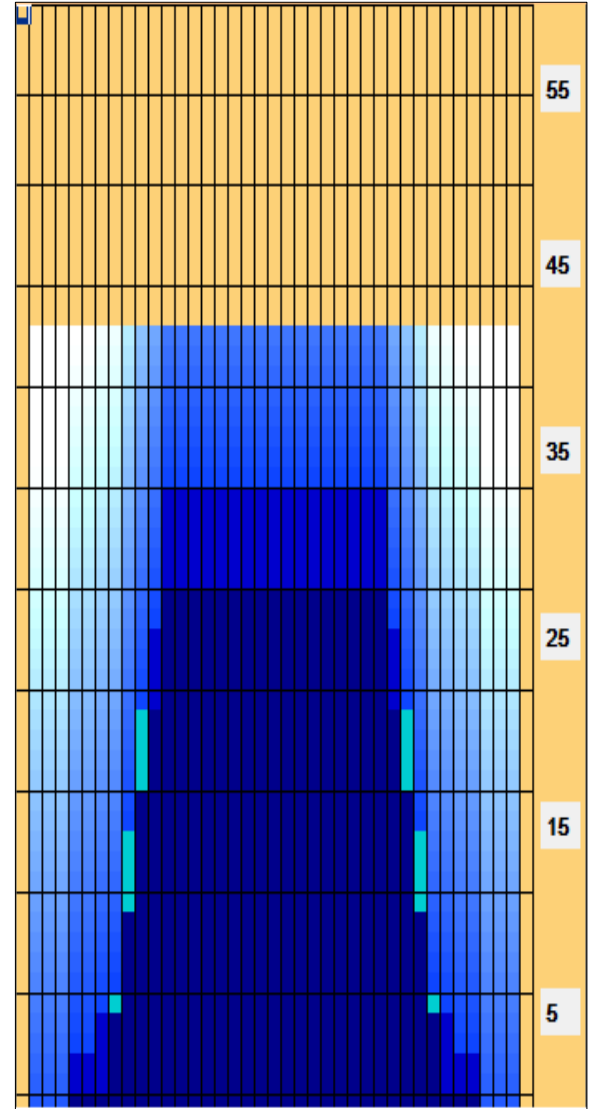
Reverse



Combined



Buff



Item	3L-7L:18L-18R	8L-12L:18L-18R	13L-17L:18L-18R	18L-18R:17R-13R	18L-18R:12R-8R	18L-18R:7R-3R
Description	Outside Track:Middle	Middle Track:Middle	Inside Track:Middle	Middle: Inside Track	Middle:Middle Track	Middle:Outside Track
Track Zone Ratio	5.22	1.41	1	1	1.41	5.22

