

# 202504\_Fujieda



<b>Oil Pattern Distance:</b>	<b>43 Feet</b>	<b>Reverse Brush Drop:</b>	<b>43 Feet</b>	<b>Oil Per Board:</b>	<b>50 uL</b>
<b>Forward Oil Total:</b>	<b>13.15 mL</b>	<b>Reverse Oil Total:</b>	<b>9.65 mL</b>	<b>Volume Oil Total:</b>	<b>22.8 mL</b>
<b>Forward Boards Crossed:</b>	<b>263 Boards</b>	<b>Reverse Boards Crossed:</b>	<b>193 Boards</b>	<b>Total Boards Crossed:</b>	<b>456 Boards</b>

	Start	Stop	Loads	Speed	Crossed	Start	End	Feet	T.Oil
1	3L	2R	1	10	36	0.0	0.0	0.0	1800
2	3L	3R	2	14	70	0.0	3.9	3.9	3500
3	8L	8R	2	18	50	3.9	9.0	5.1	2500
4	9L	9R	2	22	46	9.0	15.2	6.2	2300
5	10L	10R	2	22	42	15.2	21.4	6.2	2100
6	11L	11R	1	26	19	21.4	25.0	3.6	950
7	2L	2R	0	30	0	25.0	43.0	18.0	0

	Start	Stop	Loads	Speed	Crossed	Start	End	Feet	T.Oil
1	2L	2R	0	30	0	43.0	32.0	-11.0	0
2	12L	12R	2	26	34	32.0	24.7	-7.3	1700
3	11L	11R	2	22	38	24.7	18.5	-6.2	1900
4	10L	10R	3	22	63	18.5	9.2	-9.3	3150
5	8L	8R	1	18	25	9.2	6.7	-2.5	1250
6	4L	4R	1	14	33	6.7	4.8	-1.9	1650
7	2L	2R	0	14	0	4.8	0.0	-4.8	0

Conditioner:  
Type In or Select  
One

TransferType:  
Type In or Select  
One

Forward



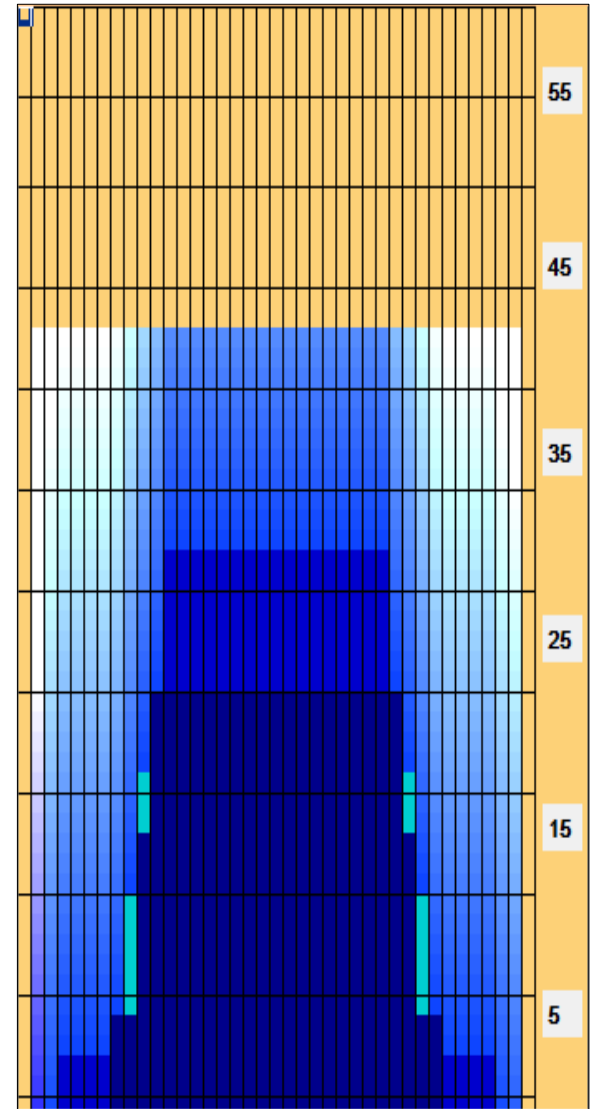
Reverse



Combined



Buff



Item	3L-7L:18L-18R	8L-12L:18L-18R	13L-17L:18L-18R	18L-18R:17R-13R	18L-18R:12R-8R	18L-18R:7R-3R
Description	Outside Track:Middle	Middle Track:Middle	Inside Track:Middle	Middle: Inside Track	Middle:Middle Track	Middle:Outside Track
Track Zone Ratio	5	144	1	1	144	5

