

IWATA INDUSTRY OPEN TOURNAMENT 2022



Oil Pattern Distance: 43 Feet **Reverse Brush Drop:** 38 Feet **Oil Per Board:** 50 uL
Forward Oil Total: 14.9 mL **Reverse Oil Total:** 10.25 mL **Volume Oil Total:** 25.15 mL
Forward Boards Crossed: 298 Boards **Reverse Boards Crossed:** 205 Boards **Total Boards Crossed:** 503 Boards

	Start	Stop	Loads	Speed	Crossed	Start	End	Feet	T.Oil
1	2L	2R	1	10	37	0.0	0.0	0.0	1850
2	5L	5R	2	14	62	0.0	3.9	3.9	3100
3	8L	8R	2	18	50	3.9	9.0	5.1	2500
4	9L	9R	3	18	69	9.0	16.6	7.6	3450
5	10L	10R	3	22	63	16.6	25.9	9.3	3150
6	12L	12R	1	22	17	25.9	29.0	3.1	850
7	2L	2R	0	26	0	29.0	30.0	1.0	0
8	2L	2R	0	30	0	30.0	43.0	13.0	0

Forward Reverse More

	Start	Stop	Loads	Speed	Crossed	Start	End	Feet	T.Oil
1	2L	2R	0	30	0	43.0	38.0	-5.0	0
2	12L	12R	2	26	34	38.0	30.7	-7.3	1700
3	11L	11R	2	26	38	30.7	23.4	-7.3	1900
4	10L	10R	1	26	21	23.4	19.8	-3.6	1050
5	8L	8R	1	22	25	19.8	16.7	-3.1	1250
6	7L	7R	1	22	27	16.7	13.6	-3.1	1350
7	6L	6R	1	18	29	13.6	11.1	-2.5	1450
8	5L	5R	1	18	31	11.1	8.6	-2.5	1550
9	2L	2R	0	14	0	8.6	0.0	-8.6	0

Forward Reverse More

Conditioner:
Type In or Select One

TransferType:
Type In or Select One

Forward



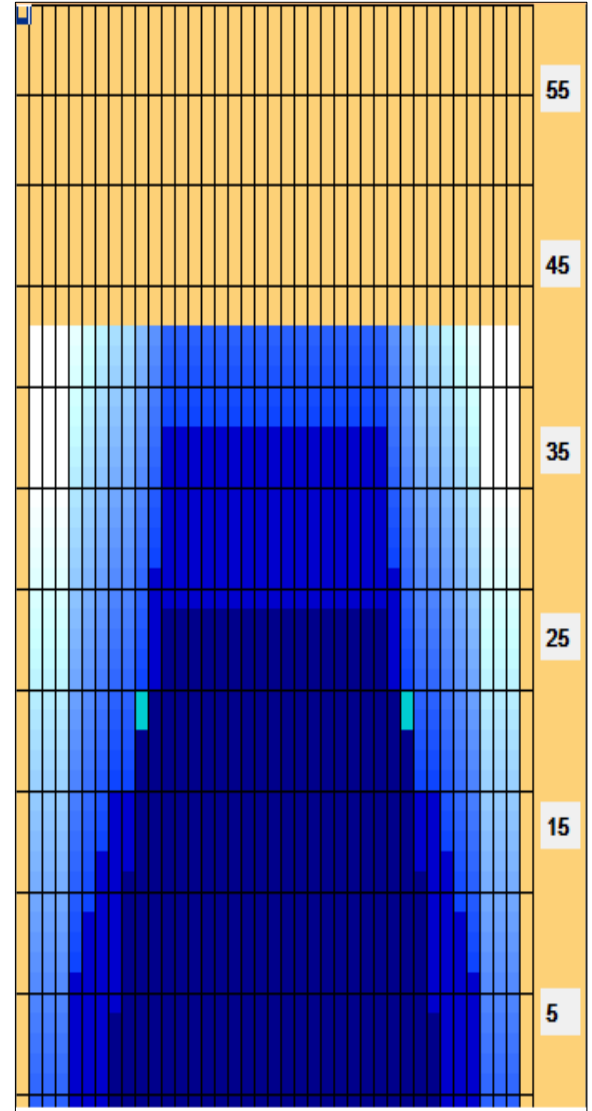
Reverse



Combined



Buff



Item	3L-7L:18L-18R	8L-12L:18L-18R	13L-17L:18L-18R	18L-18R:17R-13R	18L-18R:12R-8R	18L-18R:7R-3R
Description	Outside Track:Middle	Middle Track:Middle	Inside Track:Middle	Middle: Inside Track	Middle:Middle Track	Middle:Outside Track
Track Zone Ratio	6.18	1.38	1	1	1.38	6.18

